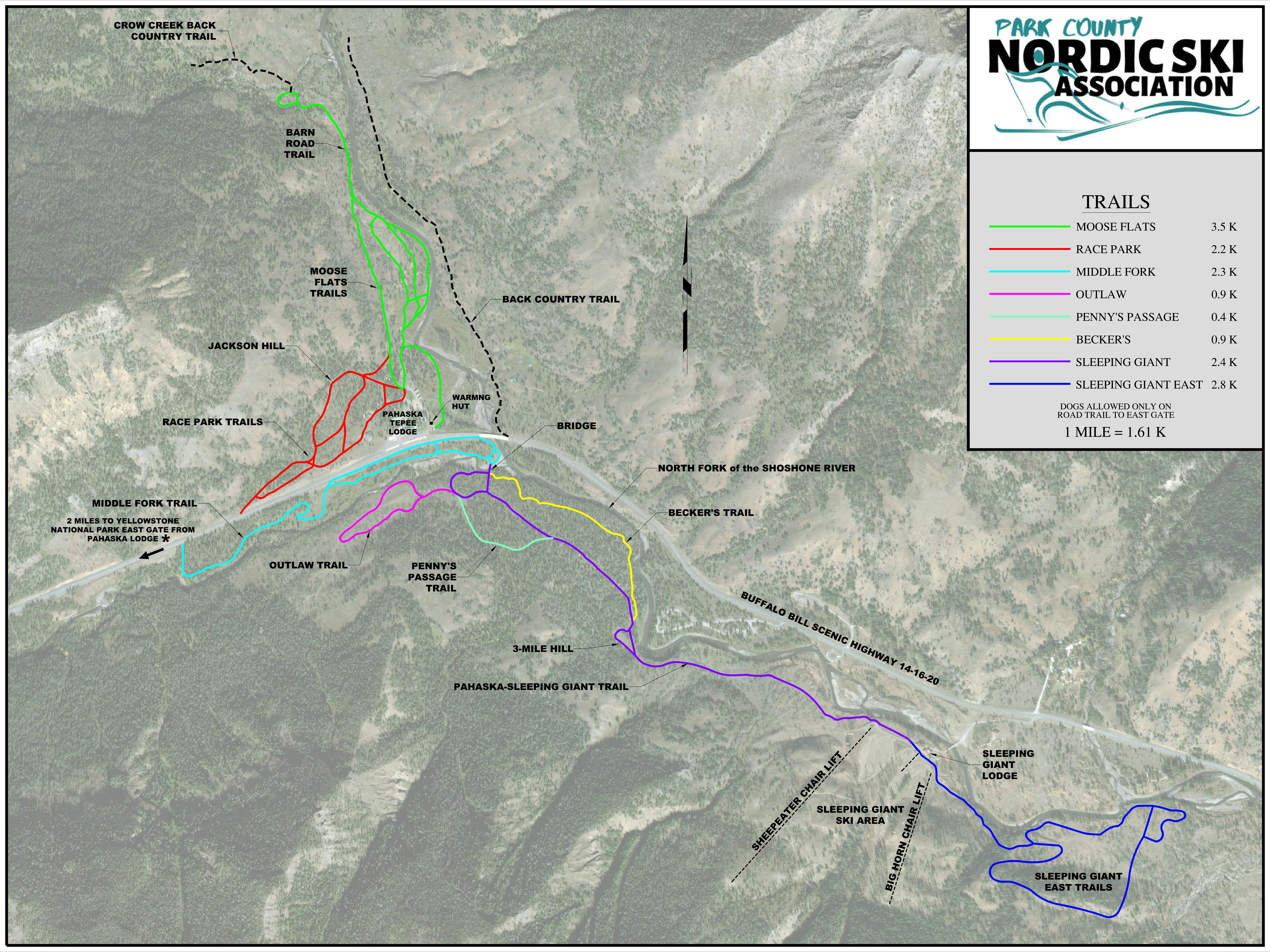


**TRAILS**

	MOOSE FLATS	3.5 K
	RACE PARK	2.2 K
	MIDDLE FORK	2.3 K
	OUTLAW	0.9 K
	PENNY'S PASSAGE	0.4 K
	BECKER'S	0.9 K
	SLEEPING GIANT	2.4 K
	SLEEPING GIANT EAST	2.8 K

DOGS ALLOWED ONLY ON ROAD TRAIL TO EAST GATE

1 MILE = 1.61 K



CROW CREEK BACK COUNTRY TRAIL

BARN ROAD TRAIL

MOOSE FLATS TRAILS

JACKSON HILL

RACE PARK TRAILS

PAHASKA TEPEE LODGE

WARMING HUT

BRIDGE

NORTH FORK of the SHOSHONE RIVER

BECKER'S TRAIL

BUFFALO BILL SCENIC HIGHWAY 14-16-20

MIDDLE FORK TRAIL  
 2 MILES TO YELLOWSTONE NATIONAL PARK EAST GATE FROM PAHASKA LODGE \*

OUTLAW TRAIL

PENNY'S PASSAGE TRAIL

3-MILE HILL

PAHASKA-SLEEPING GIANT TRAIL

SLEEPING GIANT LODGE

SLEEPING GIANT SKI AREA

SLEEPING GIANT EAST TRAILS

SHEEPEATER CHAIR LIFT

BIG HORN CHAIR LIFT